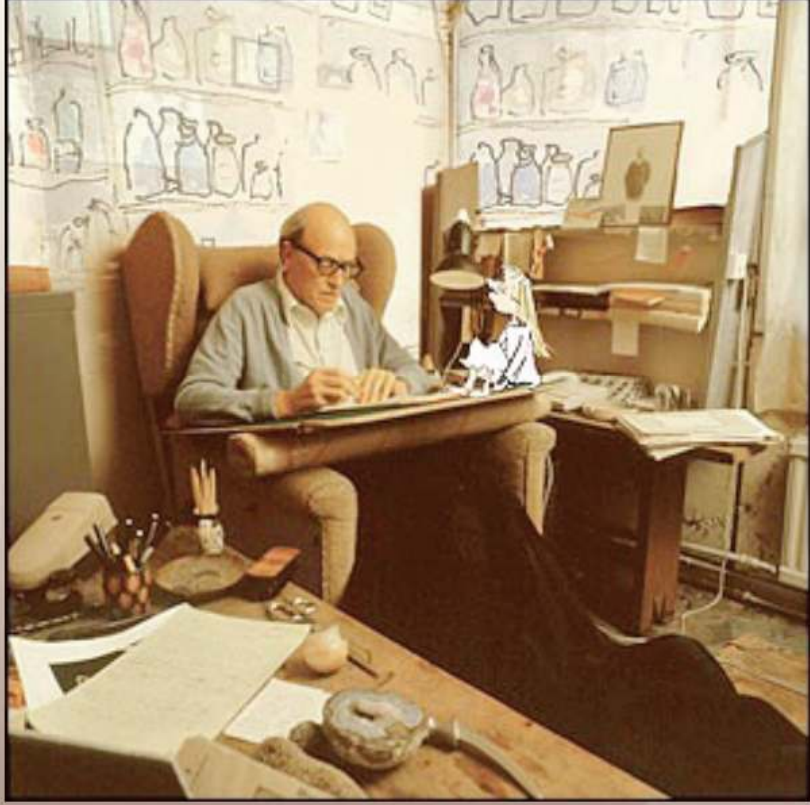


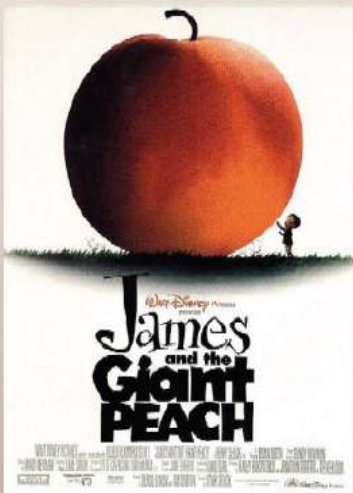
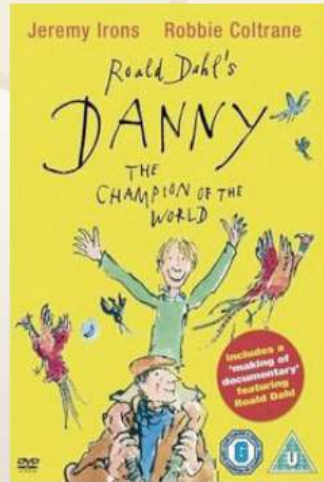


CINDY  
DANIEL  
KIRSTIN  
KRISHA  
STEPHEN

# CHARLIE AND THE CHOCOLATE FACTORY

# ROALD DAHL





# INFLUENCES



- Dahl in his school uniform



Dahl in uniform in Africa



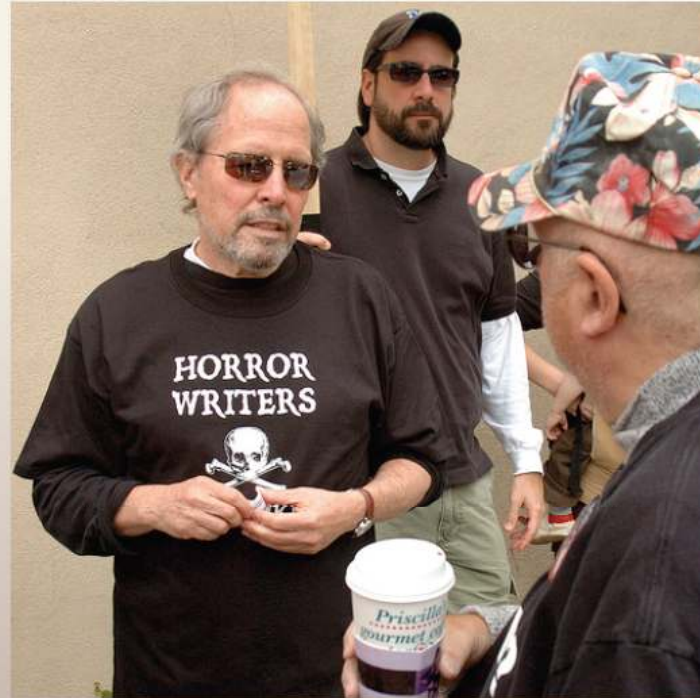
Dahl's gypsy wagon



**FIRST MOVIE CREW**

[Click to go to the next page in the document](#)

# DAVID SÉLTZER



Uncredited screenwriter



- Edited up to 30% of Roald Dahl's original script
- Very few quotes from original book
- Lots of literary quotes from Shakespeare, Oscar Wilde, John Masefield, Ogden Nash, Arthur O'Shaughnessy, Samuel Coleridge, and many others
- Changed many main plot points: Slugworth the villain, nut room and others



# MEL STUART



The Director



Black pygmy Oompa-Loompas, illustrated by Faith Jaques for the first British edition of *Charlie and the Chocolate Factory*, 1977



- Convinced to do the movie and to add songs by his daughter
- Said in “Pure Imagination” that he wanted the movie to cater to both children and adults
- Shows the interests of the time with the amount of “machines” in the movie
- The Oompa Loompas were changed for political correctness

- Quaker Oats funded the movie (\$3 million)
- Name change to tie into the Quaker Oats Wonka Bar
- The bar was a flop. It melted on the shelves
- Later, the name was sold to Nestle
- No where in the movie is there a Quaker Oats logo. This is different from modern movies.



# **ELEMENTS OF CINEMATOGRAPHY**

# LOCATION



- - Most of the movie was shot in Munich and parts of West Germany to reduce costs of filming and Munich was seen by Mel Stuart as a wonderland distant from the US
- - Filming in any location posed a problem as the setting of Willy Wonka's Factory was not revealed in the novel (Cars, Currency, and Flags of the setting were removed)

# THE FACTORY



- The factory was built from the ground up inside an actual Munich factory
- The scene with the children entering the chocolate factory was actually their first time entering the set

# LACK OF CGI



- In 1971, CGI (Computer-Generated Imaging) was not invented, which made adapting such a fantastical story difficult.
- This led to the removal of the nut room and included instead the Geese/Golden Egg room

- <http://www.youtube.com/watch?v=aai4TMoKjeM>

<http://www.youtube.com/watch?v=aai4TMoKjeM>



# STAR WARS AND VIOLET



- The filming technique of frame overlay: Star Wars Episode 4 (1977) the first movie and Violet

# How VIOLET TURNED VIOLET



- Violet: real frames plus CGI

# THE NUT ROOM



# OOMPA LOOMPAS



# TIM BURTON



- He was an animator before he became a director
- The parallels of Tim Burton and Willy Wonka

# JOHN AUGUST



- Looking into the mind of the screenwriter

# CHARLIE & THE HERO



Complex?  
Dynamic?  
Inspiring?



1971 film.



2005 film



Violet  
Beauregarde

Veruca Salt

Augustus Gloop

Charlie Bucket

Mike Teavee



# WILLY WONKA

Managing Morality?







"Come on!" cried Mr Wonka.  
"Get a move on please!..."

Official  
Collector's  
Edition